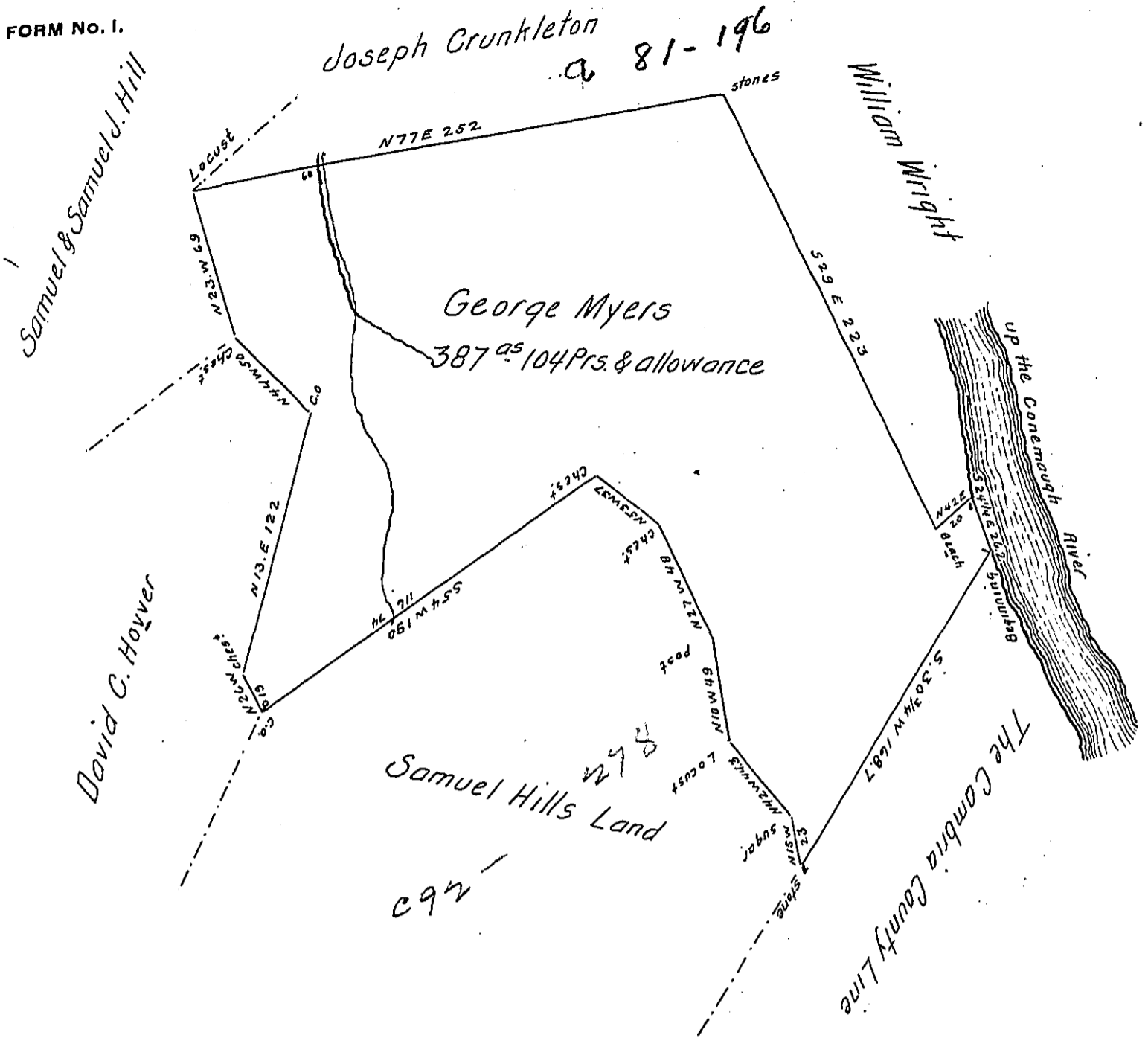


FORM NO. 1.



The above described Tract of Land is Situated on the Laurel Hill in Saint Clair township Westmoreland County Penn^a Containing Three hundred eighty seven acres and one hundred and four perches and the Usual Allowance of Six per cent &c. Which was Surveyed the 3^d day of October 1845 by George Mechling Esquire then Deputy Surveyor of Said County for Which Tract of land George Myers of Said township obtained a Warrant from the Comonweth of Penn^a the 15th day of December 1863. Having Carefully examined the Survey as Made by Said Mechling and find it Correct. And in Pursuance of Said Warrant granted to Said Myers. I Return the Survey on Same to the Surveyor Generals Office of Penn^a & Given under My hand the 25 day of January A. D. 1864.

George Mechling Esq.

To James P. Barr Esquire }
Surveyor Gen. of Pennsylvania }

for A. M. Altman C. S.

IN TESTIMONY that the above is a copy of the original remaining on file in the Department of Internal Affairs of Pennsylvania, made conformably to an Act of Assembly approved the 16th day of February, 1833, I have hereunto set my Hand and caused the Seal of said Department to be affixed at Harrisburg, this seventh day of May 1906

Isaac P. Brown
Secretary of Internal Affairs.